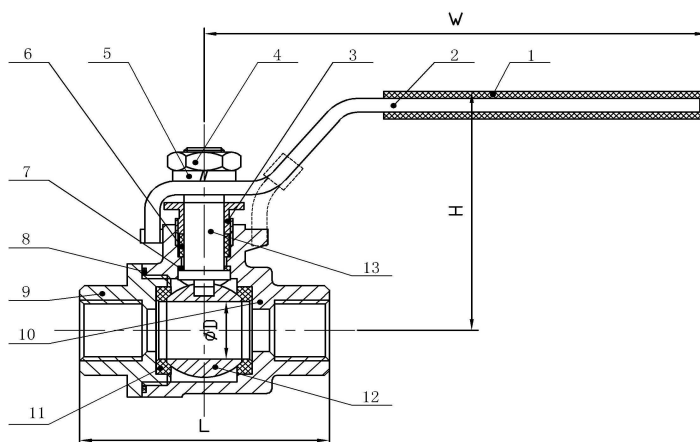




Cangzhou Changyuan Fittings Co.,Ltd

Add:No.26 Shigang Road,Development Zone,Cangzhou ,Hebei,China Pc:061000

[Http://www.con-well.com](http://www.con-well.com) Email:con-well@vip.163.com



2PC BALL VALVE NORMAL TYPE I (FULL PORT) (mm)

| DN | G | D | L | H | W | Unit weight(KG) | Qty/Carton |
|-----|--------|------|-------|-------|--------|-----------------|------------|
| 8 | 1/4" | 12.5 | 49.0 | 47.0 | 100.00 | 0.200 | |
| 10 | 3/8" | 12.5 | 49.0 | 47.0 | 100.00 | 0.200 | |
| 15 | 1/2" | 15.0 | 57.0 | 48.0 | 100.00 | 0.250 | |
| 20 | 3/4" | 20.0 | 64.0 | 60.0 | 112.00 | 0.385 | |
| 25 | 1" | 25.0 | 75.2 | 64.5 | 112.00 | 0.555 | |
| 32 | 1 1/4" | 32.0 | 88.5 | 77.5 | 145.00 | 0.960 | |
| 40 | 1 1/2" | 38.0 | 97.0 | 82.0 | 145.00 | 1.350 | |
| 50 | 2" | 50.0 | 120.5 | 97.0 | 165.00 | 2.180 | |
| 65 | 2 1/2" | 65.0 | 150.0 | 117.0 | 230.00 | 4.400 | |
| 80 | 3" | 76.0 | 168.0 | 126.0 | 230.00 | 6.350 | |
| 100 | 4" | 94.0 | 214.0 | 172.0 | 308.00 | 11.860 | |

MATERIAL LIST

| ITEM | DESCRIPTION | MATERIAL |
|------|---------------|----------|
| 1 | PLASTIC COVER | PLASTIC |
| 2 | HANDLE | 304/201 |
| 3 | GLAND NUT | 304 |
| 4 | STEM NUT | 304 |
| 5 | THRUST WASHER | 304 |
| 6 | STEM PACKING | PTFE |
| 7 | STEM SEAL | PTFE |
| 8 | BODY SEAL | PTFE |
| 9 | CAP | CF8/CF8M |
| 10 | BODY | CF8/CF8M |
| 11 | BALL SEAT | RPTFE |
| 12 | BALL | 304/316 |
| 13 | STEM | 304 |

FEATURES:

- Handle with lock can be choiced.
- Working pressure:1000PSI(PN64).
- Working temperature:-10℃ to 150℃.
- Suitable medium:W.O.G.
- Thread: BSP,BSPT,DIN,NPT.
- PED97/23/EC(CE0038)Approved.
- Inspection Testing:API598,EN12266.
- Size of carton:28.5×25.5×18.5cm.
- Size of carton for size 4":44.5×28×19.50cm.