

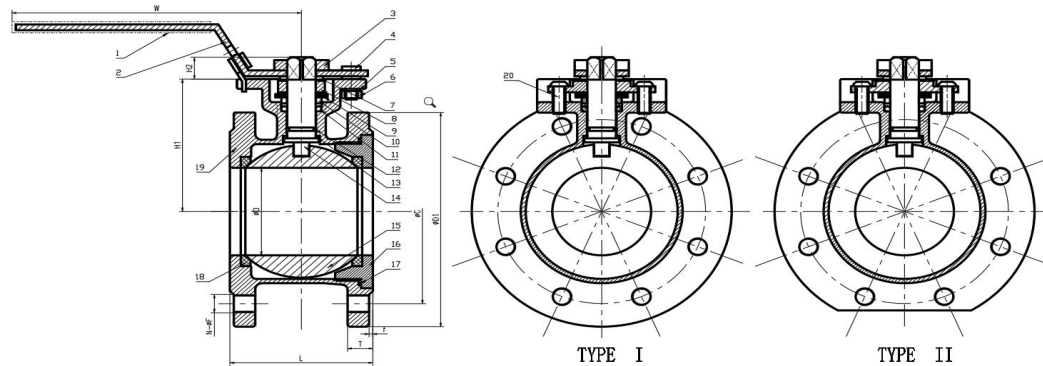
Cangzhou Changyuan Fittings Co.,ltd

[Http://www.con-well.com](http://www.con-well.com) email:con-well@vip.163.com

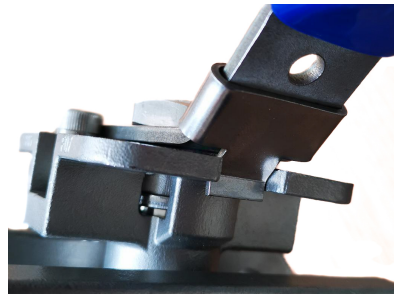
1PC FLANGED BALL VALVES ,WITH DIRECT MOUNTING PAD, PN16

DN15-DN100 (Handle with lock) , Type I (Round flange) & Type II (Flat flange)

DN15-DN100



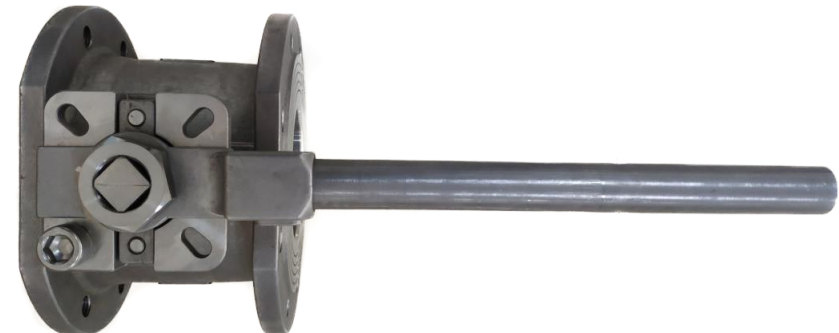
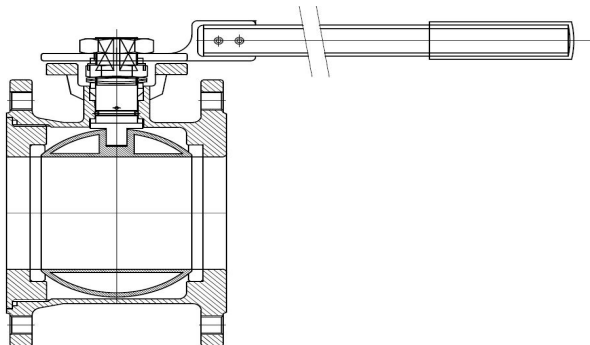
Details of products: Handle with lock device & marked pneumatic head size



Flange surface: two options (Regular/Customized)



DN150 (Handle without lock), Type I(Round flange)



Cangzhou Changyuan Fittings Co.,ltd

Http://www.con-well.com email:con-well@vip.163.com

1PC FLANGED BALL VALVES ,WITH DIRECT MOUNTING PAD, PN16 Dimension list

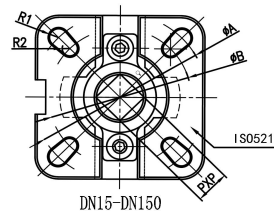
Material list

| Item | Description | Material |
|------|-------------------|----------|
| 1 | Plastic Cover | Plastic |
| 2 | Handle | 304 |
| 3 | Nut | 304 |
| 4 | Stop bolt | 304 |
| 5 | Bolt washer | 304 |
| 6 | Nut-2 | 304 |
| 7 | Washer | 304 |
| 8 | Glande | 304 |
| 9 | Belleville Washer | 301 |
| 10 | Flat Pad | 304 |
| 11 | Stem packing | PTFE |
| 12 | O-Ring | FKM |
| 13 | Thrust Washer | PTFE |
| 14 | Stem | 304/316 |
| 15 | Ball | 304/316 |
| 16 | Cap | 304/316 |
| 17 | Joint gasket | PTFE |
| 18 | Ball seat | RPTFE |
| 19 | Body | 304/316 |
| 20 | Bole | 304 |

Dimension list

| Size | DN15 | DN20 | DN25 | DN32 | DN40 | DN50 | DN65 | DN80 | DN100 | DN150 |
|---------|---------|-------|---------|-------|---------|-------|---------|-------|---------|-------|
| ΦD | 15 | 20 | 25 | 32 | 38 | 50 | 65 | 76 | 94 | 120 |
| ΦD1 | 95 | 105 | 115 | 140 | 150 | 165 | 185 | 200 | 220 | 285 |
| ΦC | 65 | 75 | 85 | 100 | 110 | 125 | 145 | 160 | 180 | 240 |
| N-ΦF | 4-M12 | 4-M12 | 4-M12 | 4-M16 | 4-M16 | 4-M16 | 4-M16 | 8-M16 | 8-M16 | 8-M20 |
| T | 9 | 9 | 12 | 16 | 16 | 18 | 18 | 20 | 20 | 22 |
| f | 2 | 2 | 2 | 3 | 3 | 3 | 3 | 3 | 3 | 3 |
| H1 | 48.5 | 53.5 | 60 | 72 | 83.5 | 86 | 106 | 115 | 140.8 | 160 |
| H2 | 9 | 9 | 11 | 11 | 14 | 14 | 17 | 17 | 22 | 28 |
| ΦA | 42 | 42 | 50 | 50 | 70 | 70 | 102 | 102 | 102 | 125 |
| ΦB | 36 | 36 | 42 | 42 | 50 | 50 | 70 | 70 | 70 | 102 |
| R1 | 3 | 3 | 3.5 | 3.5 | 4.5 | 4.5 | 5.5 | 5.5 | 5.5 | 5.5 |
| R2 | 3 | 3 | 3 | 3 | 3.5 | 3.5 | 4.5 | 4.5 | 4.5 | 6.5 |
| P*P | 9x9 | 9x9 | 11x11 | 11x11 | 14x14 | 14x14 | 17x17 | 17x17 | 22x22 | 27x27 |
| W | 120.5 | 120.5 | 140 | 140 | 170 | 170 | 230 | 230 | 320 | 485 |
| L | 39 | 44 | 50 | 54 | 62 | 75 | 90 | 110 | 140 | 190 |
| ISO5211 | F03/F04 | | F04/F05 | | F05/F07 | | F07/F10 | | F10/F12 | |

ISO5211



FEATURES:

- Working pressure:PN16.
- Working temperature:-10℃ to 150℃.
- Suitable medium:W.O.G.
- Flanged ends: EN1092.
- PED97/23/EC(CE0343)Approved.
- Inspection Testing:API598,EN12266.