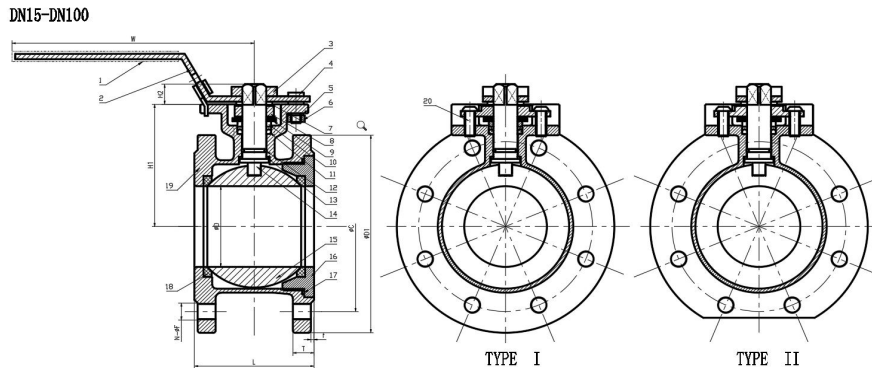
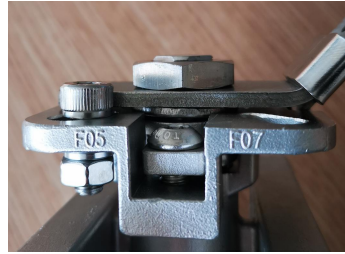


1PC FLANGED BALL VALVES ,WITH DIRECT MOUNTING PAD, PN16

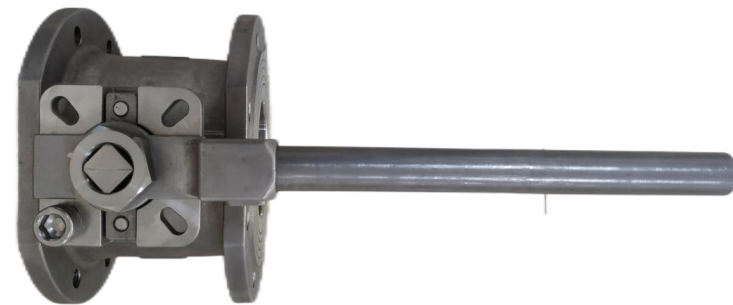
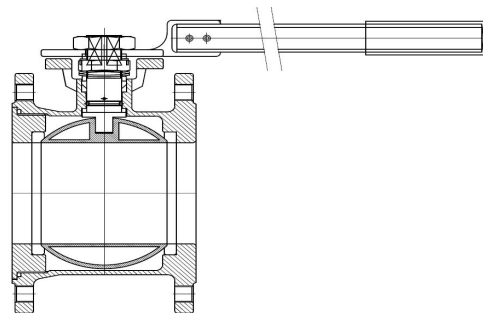
DN15-DN100 (Handle with lock) , Type I (Round flange) & Type II (Flat flange)



Details of products: Handle with lock device / marked pneumatic head size / Flange surface: two options (Regular/Customized)



DN150 (Handle without lock), Type I(Round flange)



1PC FLANGED BALL VALVES ,WITH DIRECT MOUNTING PAD, PN16 Dimension list

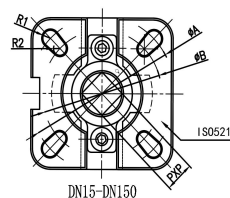
Material list

Item	Description	Material
1	Plastic Cover	Plastic
2	Handle	304
3	Nut	304
4	Stop bolt	304
5	Bolt washer	304
6	Nut-2	304
7	Washer	304
8	Glande	304
9	Belleville Washer	301
10	Flat Pad	304
11	Stem packing	PTFE
12	O-Ring	FKM
13	Thrust Washer	PTFE
14	Stem	304/316
15	Ball	304/316
16	Cap	304/316
17	Joint gasket	PTFE
18	Ball seat	RPTFE
19	Body	304/316
20	Bole	304

Dimension list

Size	DN15	DN20	DN25	DN32	DN40	DN50	DN65	DN80	DN100	DN150
ΦD	15	20	25	32	38	50	65	76	94	120
ΦD1	95	105	115	140	150	165	185	200	220	285
ΦC	65	75	85	100	110	125	145	160	180	240
N-ΦF	4-M12	4-M12	4-M12	4-M16	4-M16	4-M16	4-M16	8-M16	8-M16	8-M20
T	9	9	12	16	16	18	18	20	20	22
f	2	2	2	3	3	3	3	3	3	3
H1	48.5	53.5	60	72	83.5	86	106	115	140.8	160
H2	9	9	11	11	14	14	17	17	22	28
ΦA	42	42	50	50	70	70	102	102	102	125
ΦB	36	36	42	42	50	50	70	70	70	102
R1	3	3	3.5	3.5	4.5	4.5	5.5	5.5	5.5	5.5
R2	3	3	3	3	3.5	3.5	4.5	4.5	4.5	6.5
P*P	9x9	9x9	11x11	11x11	14x14	14x14	17x17	17x17	22x22	27x27
W	120.5	120.5	140	140	170	170	230	230	320	485
L	39	44	50	54	62	75	90	110	140	190
ISO5211	F03/F04		F04/F05		F05/F07		F07/F10			F10/F12

ISO5211



FEATURES:

- Working pressure:PN16.
- Working temperature:-10°C to 150°C.
- Suitable medium:W.O.G.
- Flanged ends: EN1092.
- PED97/23/EC(CE0343)Approved.
- Inspection Testing:API598,EN12266.