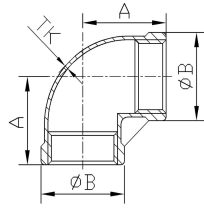


CHANGYUAN LIGHT FITTINGS

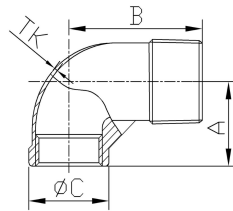
(Measures:mm)

90°Elbow (LB)



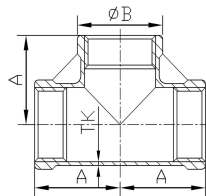
Item \ Size	1/8"	1/4"	3/8"	1/2"	3/4"	1"	1 1/4"	1 1/2"	2"	2 1/2"	3"	4"
A	16	18	21	25	30	34	40	43.5	53.5	63.5	74	89
B	14	16.5	20	26	32	39.2	47.2	54.5	67	85	97.5	124.5
TK	1.6	1.7	1.5	1.6	1.7	2.1	2.2	2.4	2.7	3.3	2.8	3.8

90°Street Elbows (SLB)



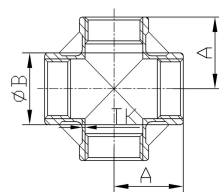
Item \ Size	1/8"	1/4"	3/8"	1/2"	3/4"	1"	1 1/4"	1 1/2"	2"	2 1/2"	3"	4"
A	17	19.3	23.5	23	27.3	32.5	37	41.6	50.7	64.5	75	97
B	26	27	29.4	36.2	42	51.3	51.5	57.7	67.3	81	92	115
C	13.8	16.7	22	26.2	32	39	47.5	54.5	67.5	84	97	124.5
TK	2.8	2	2.2	2.2	2.1	2.2	2.5	2.6	2.6	3.3	3	4

Tees (TB)



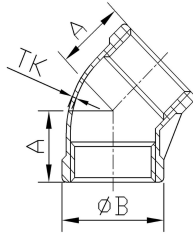
Item \ Size	1/8"	1/4"	3/8"	1/2"	3/4"	1"	1 1/4"	1 1/2"	2"	2 1/2"	3"	4"
A	16	19	21	25	30	34	40	44	53.5	64	73	93.5
B	14	17	20	26	32	39.2	42	54	67.5	84	97	125.6
TK	1.9	1.5	2.3	1.8	1.9	2.1	2.3	2.4	2.5	3.3	3.3	4.6

Crosses (+B)



Item \ Size	1/8"	1/4"	3/8"	1/2"	3/4"	1"	1 1/4"	1 1/2"	2"	2 1/2"	3"	4"
A	16	18	21	25	32	34	45	44	54	69	78	96
B	14	16.5	20	26	32	39	49	54.5	67	83.5	98.2	125.4
TK	2	2.3	2.2	1.7	1.8	2.1	2.1	2.1	2.1	3.3	3.3	4

45°Elbows (45°LB)



Item \ Size	1/8"	1/4"	3/8"	1/2"	3/4"	1"	1 1/4"	1 1/2"	2"	2 1/2"	3"	4"
A	16	17	19	21	25	29	33	37	43	49	54	64
B	13	18	21	26	32	39	49	56	67.5	83.5	97.5	124.5
TK	2	2	2.2	1.8	1.9	2	2.3	2.3	2.5	3	3	3.5

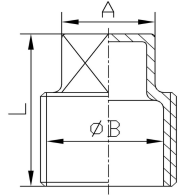
*

*

*

*

Square Plug (SQ)

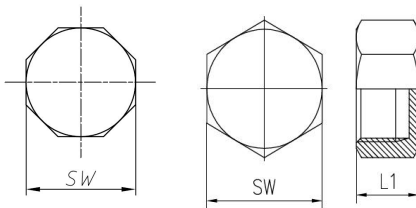


Item \ Size	1/8"	1/4"	3/8"	1/2"	3/4"	1"	1 1/4"	1 1/2"	2"	2 1/2"	3"	4"
A	7	8.5	10	11	16	19	21.5	21.3	26.8	32	34	42
L	11	15	16	19	22	25	29.5	30	37	39	44	43
B	0	0	0	15.5	20.5	26.3	35	40.2	50.4	67.6	79.3	101
Note	solid	solid	solid	hollow	hollow	hollow	hollow	hollow	hollow	hollow	hollow	hollow

*

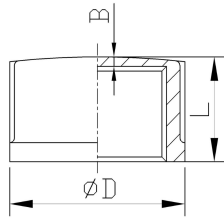
*

Hexagon Caps (HCB)



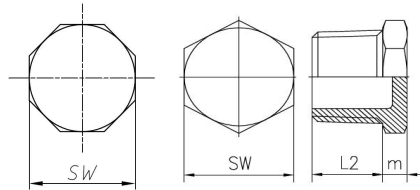
Item \ Size	1/8"	1/4"	3/8"	1/2"	3/4"	1"	1 1/4"	1 1/2"	2"	2 1/2"	3"	4"
SW	12.5	16	18.8	25	31	37.5	47	53	64.5	80.5	93	121
L	12.5	16	16.5	19	24	26	29	25	29.5	32	38.5	41
Square	6	6	6	6	8	8	8	8	8	8	8	8
TK	2.4	2.6	3.5	3.7	2.5	3.2	3.3	3.5	3.5	3.5	3.5	3.8

Round Caps (CB)



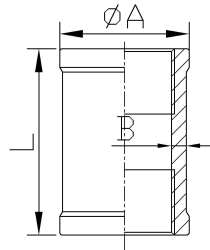
Item \ Size	1/8"	1/4"	3/8"	1/2"	3/4"	1"	1 1/4"	1 1/2"	2"	2 1/2"	3"	4"
D	13.5	16.4	20	28	35	40	47.5	53.5	65.5	82	97.5	122
L	12	15.3	16.3	21	22.2	24	24	30	29.4	32	37	40
B	2.2	2.8	2.5	2.9	3.3	2.2	3	3.8	3.3	3	4.4	4.5

Hexagon Plug (HP)



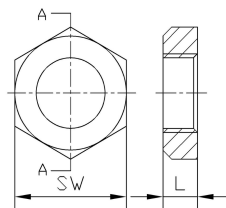
Item \ Size	1/8"	1/4"	3/8"	1/2"	3/4"	1"	1 1/4"	1 1/2"	2"	2 1/2"	3"	4"
SW	12	15	18	22	28	36	44	50	62	78.2	92	116
m	5	5	6	6	8	8	9.5	10	9.2	11	11.6	10.5
L2	8.5	11.5	12	15.3	16.5	18.4	21	20.5	25	28	30.2	36
Square	6	6	6	6	6	8	8	8	8	8	8	8
Note	solid	solid	solid	hollow	hollow	hollow	hollow	hollow	hollow	hollow	hollow	hollow

Socket Banded (SB)



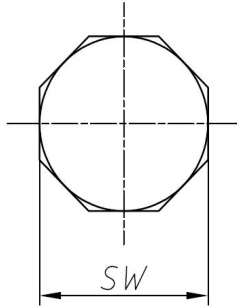
Item \ Size	1/8"	1/4"	3/8"	1/2"	3/4"	1"	1 1/4"	1 1/2"	2"	2 1/2"	3"	4"
A	14	16.5	20	26	32	39	47	54.5	67.6	83.3	97	122.5
L	20	22.3	27	31.2	35	40	48	50	58.9	60.8	65.5	79
B	2	2.4	2.9	1.8	1.9	2.2	2.1	2.5	2.5	2.7	3	3.4

Hexagon Nut (LN)



Item \ Size	1/8"	1/4"	3/8"	1/2"	3/4"	1"	1 1/4"	1 1/2"	2"	2 1/2"	3"	4"
SW	15	19.2	24	26.5	32	38.5	48	55	68	88.5	101.6	129.5
L	7	6	6.5	8	10	10	11.2	12	13.3	15	17.3	22.3

Hose Nipples (HON)

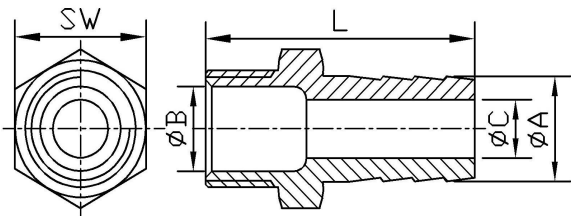


Hose Nipples Long Type (HON)

Item \ Size	1/8"	1/4"	3/8"	1/2"	3/4"	1"	1 1/4"	1 1/2"	2"	2 1/2"	3"	4"
A	7	9	11	15	20	26	34	40.5	52.5	63.5	76.1	100
SW	11.2	15	18.3	22	28	36	44	50	62	78	91.3	116
L	41	48	48	52.6	61	66	75	82	98.5	116	119.5	127
B	4.3	8	11.3	15.4	20	26.2	35.4	40.2	51	64.7	77	102
C	4.2	5	7	10	15.1	20.4	27.6	33.5	45.5	53.4	66.7	91
Square	6	6	6	6	6	8	8	8	8	8	8	8

Hose Nipples Long Type (HON, Φ A special)

Item \ Size	1/4"	3/8"	1/2"	1/2"	1/2"	3/4"	1"
A	11	12	11	13	20	25	27
SW	13.5	17	21.5	21.5	23.5	28.5	36
L	41.5	51.5	47	51.5	56.5	66.5	65
B	9	11	15	15	15	20.4	26
C	7	8.5	7	8.5	15	20.4	22
Square	6	6	6	6	6	6	8



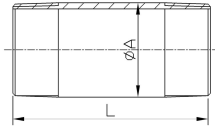
Hose Nipples Short Type (HON-II)

Item \ Size	1/8"	1/4"	3/8"	1/2"	3/4"	1"	1 1/4"	1 1/2"	2"	2 1/2"	3"	4"
A							34	40.5	52.5	63.5	76.1	100
SW							43.5	50	62	77.5	91.5	115.5
L							66	68.5	82	96.5	105	115
B							35.2	40.4	51.5	64.2	77.3	102.2
C							27.8	33.8	45.7	55	66.8	90.6
Square							8	8	8	8	8	8

Hose Nipples Short Type (HON TUK type)

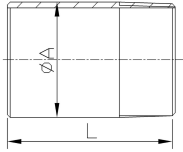
Item \ Size	1/8"	1/4"	3/8"	1/2"	3/4"	1"	1 1/4"	1 1/2"	2"	2 1/2"	3"	4"
A				15	20.5	27	33	39	53			
SW				22	28	34	44	49.5	61.5			
L				57.5	66	76	79	82.5	92.5			
B				15.2	20.5	26	35	40.3	51.3			
C				10.5	15.5	22	27	33	46			
Square				6	8	8	8	8	8			

Barrel Nipples (BN)



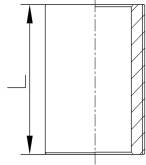
Item \ Size	1/8"	1/4"	3/8"	1/2"	3/4"	1"	1 1/4"	1 1/2"	2"	2 1/2"	3"	4"
L	40	40	40	60	60	60	80	80	100	100	120	120
A	10.3	13.7	17.1	21.34	26.67	33.4	42.16	48.26	60.33	76.3	88.9	114.3

Welding Nipples (WN)



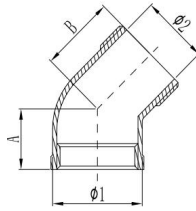
Item \ Size	1/8"	1/4"	3/8"	1/2"	3/4"	1"	1 1/4"	1 1/2"	2"	2 1/2"	3"	4"
L	30	30	30	35	40	40	50	50	50	60	70	80
A	10.3	13.7	17.1	21.34	26.67	33.4	42.16	48.26	60.33	76.3	88.9	114.3

Parrel Nipples (PN)



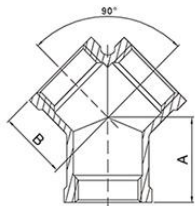
Item \ Size	1/8"	1/4"	3/8"	1/2"	3/4"	1"	1 1/4"	1 1/2"	2"	2 1/2"	3"	4"
L (parallel thread)	16	18	22	25	30	35	38	38	45	55	60	70
L (BSPT, NPT thread)	20	24	25	29	32	38	38	44	44	57	64	76

45° Street Elbows (45°SLB)



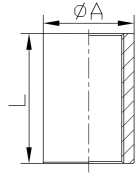
Item \ Size	1/8"	1/4"	3/8"	1/2"	3/4"	1"	1 1/4"	1 1/2"	2"	2 1/2"	3"	4"
$\Phi 1$		15.5	19	25	30	36.5	45.5	52	63.5	79.8	93.1	
$\Phi 2$		7	10.4	15.5	19.8	27	35.5	40	50.5	65.4	78.4	
A		17	19	19	20	25	33	39	40	44	75	
B		28	29	27.5	33.5	35	40	44	45	73	95	

Y Type Tee (YTB)



Item \ Size	1/8"	1/4"	3/8"	1/2"	3/4"	1"	1 1/4"	1 1/2"	2"	2 1/2"	3"	4"
A			20	24	26	34	40	46	54			
B			19	23	25	33	39	45	53			

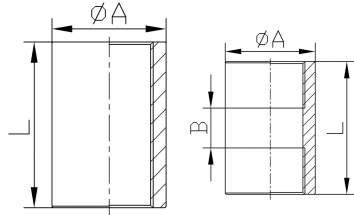
Full Coupings Standard: DIN2986



Item \ Size	1/8"	1/4"	3/8"	1/2"	3/4"	1"	1 1/4"	1 1/2"	2"	2 1/2"	3"	4"	5"	6"
A	14	18.5	21.3	26.4	31.8	39.5	48.3	54.5	66.3	82	95	122	147	174
L	17	25	26	34	36	43	48	48	56	65	71	83	92	92

Surface Choice : pipe surface, brushed surface, CNC machining surface.

Full Coupings Standard: ISO4144

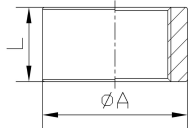


(BSP, DIN2999) (BSPT)

Thread	Item \ Size	1/8"	1/4"	3/8"	1/2"	3/4"	1"	1 1/4"	1 1/2"	2"	2 1/2"	3"	4"
DIN2999/ISO228/BSPT	A	13	17	20	24.2	30.5	37.5	46.5	53	65.5	82	95	120
	L	17	23.5	24.5	32	34.7	41	45	45	54	63	69	76
NPT	A	13	17	20	24.2	30.5	37.5	46.5	53	65.5	80	95.5	121
	L	17	23.5	24.5	32	34.7	41	45	45	54	63	66.5	74
	B	3	3	3	3	3	4	4	4	4	5	5	5

Surface Choice : pipe surface, brushed surface, CNC machining surface.

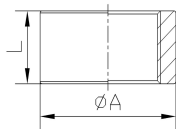
Half Coupings (NPT)



Item \ Size	1/8"	1/4"	3/8"	1/2"	3/4"	1"	1 1/4"	1 1/2"	2"	2 1/2"	3"	4"
A	13	17	20	24.2	30.5	38	47	53	65.5	80	95.5	121
L	7.8	9.8	10.5	14.5	15.5	18.8	21.5	21.5	23.7	29.8	31.3	37

Surface Choice : pipe surface, brushed surface, CNC machining surface.

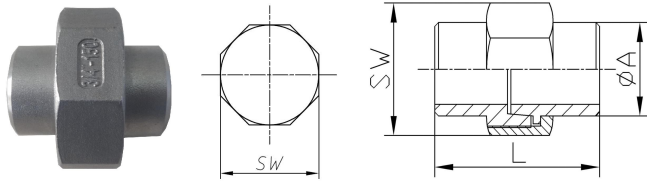
Half Coupings (BSP/DIN2999/ISO228)



Item \ Size	1/8"	1/4"	3/8"	1/2"	3/4"	1"	1 1/4"	1 1/2"	2"	2 1/2"	3"	4"
A	13	17	20	24.2	30.5	38	47	53	65.5	82	94.8	120
L	8	11.5	12	15	17	19	22	22	26	30	33	40

Surface Choice : pipe surface, brushed surface, CNC machining surface.

Unions Conical BW

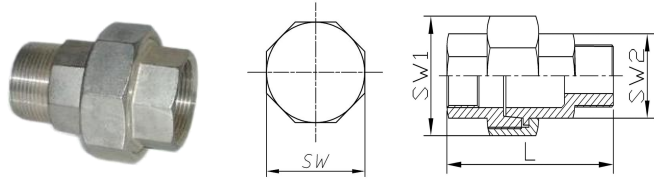


*

Item \ Size	1/8"	1/4"	3/8"	1/2"	3/4"	1"	1 1/4"	1 1/2"	2"	2 1/2"	3"	4"
SW	25	30.5	34	37	46	52	64.5	70	86	105	118.5	
A	10.2	13.5	17.2	21.3	27	33.7	42.4	48.2	60.2	76.1	89	
L	33.5	38	40	42.5	45	47.5	53	53	62	68.5	77	
Square	8	8	8	8	8	8	10	10	10	10	10	

Oponion: flat connection with PTFE seal

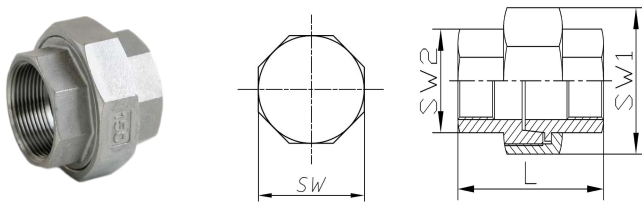
Unions conical M/F



Item \ Size	1/8"	1/4"	3/8"	1/2"	3/4"	1"	1 1/4"	1 1/2"	2"	2 1/2"	3"	4"
SW1	25	30.5	34	37	46	52	64.5	70	86	105	118.5	147
SW2	13	17	20.5	21.6	30	37	46	52	63.5	80	93	117
L	38	44	47.5	53	58	65	71.5	75	88	93	104	111
Square	8	8	8	8	8	8	10	10	10	10	10	10

Oponion: flat connection with PTFE seal

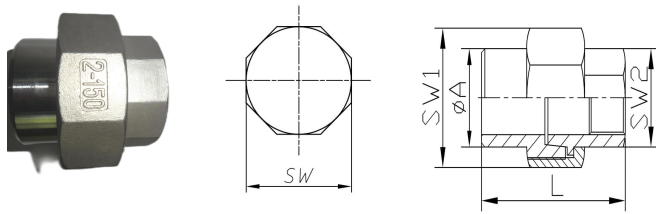
Unions conical F/F



Item \ Size	1/8"	1/4"	3/8"	1/2"	3/4"	1"	1 1/4"	1 1/2"	2"	2 1/2"	3"	4"
SW1	25	30.5	34	37	46	52	64.5	70	86	105	118.5	147
SW2	13	17	20.5	24.5	30	37	46	52	63.5	80	93	117
L	30	33.5	36.5	38	42.5	46.5	52	53	63	73	78.5	87
Square	8	8	8	8	8	8	10	10	10	10	10	10

Oponion: flat connection with PTFE seal

Unions conical BW/F

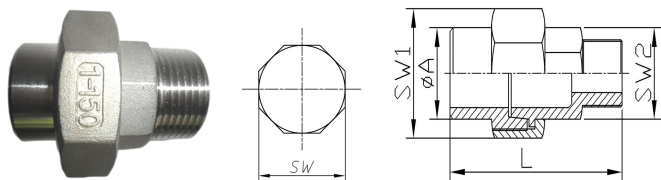


* * *

Item \ Size	1/8"	1/4"	3/8"	1/2"	3/4"	1"	1 1/4"	1 1/2"	2"	2 1/2"	3"	4"
SW1	25	30.5	34	37	46	52	64.5	70	86			
SW2	13	17	20.5	24.5	30	37	46	52	63.5			
A	10.2	13.5	17.2	21.3	27	33.7	42.4	48.3	60.2			
L		37	37	40	43.5	46.5	52	53.5	61			
Square	8	8	8	8	8	8	10	10	10			

Oponion: flat connection with PTFE seal

Unions conical BW/M

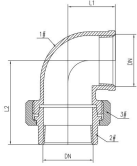


* * *

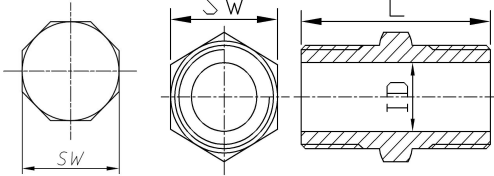
Item \ Size	1/8"	1/4"	3/8"	1/2"	3/4"	1"	1 1/4"	1 1/2"	2"	2 1/2"	3"	4"
SW1	25	30.5	34	37	46	52	64.5	70	86			
SW2	13	17	20.5	24.5	30	37	46	52	63.5			
A	10.2	13.5	17.2	21.3	27	33.7	42.4	48.3	60.3			
L		47.5	47	55	59	65	71.5	76	88			
Square	8	8	8	8	8	8	10	10	10			

Oponion: flat connection with PTFE seal

Union Elbow Conical F/F



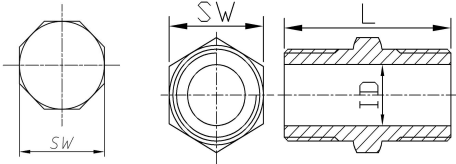
Hexagon Nipples (HN, Heavy type)



Item \ Size	1/2"	3/4"	1"	1 1/4"	1 1/2"	2"
L1	24.5	30	33	39.5	43	53.5
L2	46	53	56	67	70	85

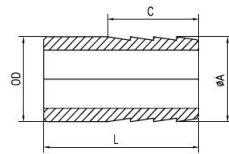
Oponion: flat connection with PTFE seal

Hexagon Nipples ISO4144 (HN)



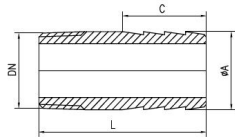
Item \ Size	1/8"	1/4"	3/8"	1/2"	3/4"	1"	1 1/4"	1 1/2"	2"	2 1/2"	3"	4"
SW	12	14.5	17.5	22.6	27.7	36	43.5	50	63	77.5	91.5	116
L	23.2	25	28.5	37	41	45.4	50	53.3	61	72	77	83
ID	5.6	9	11.2	14.7	20	26.6	35	40	50	64.3	77.3	101
Square	6	6	6	6	6	8	8	8	8	8	8	8

Simple Hose Nipple



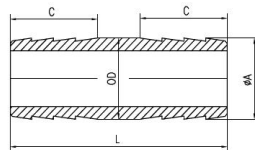
Item \ Size	1/8"	1/4"	3/8"	1/2"S	3/4"S	1"S	1 1/4"S	1 1/2"S	2"S	2 1/2"S	3"S	4"S
SW	12	14.5	17.5	22.6	27.7	34	43	48.5	61.2	77.5	91.5	116
L	23.2	25	28.5	34.5	37	42	47.5	47.5	57	61	67.5	80
ID	5.6	9	11.2	15.6	20.7	27	35.4	40.7	51.7	66.5	78.5	103
Square	6	6	6	6	6	10	10	10	10	10	10	10

Male Hose Nipple



Item \ Size	1/8"	1/4"	3/8"	1/2"	3/4"	1"	1 1/4"	1 1/2"	2"	2 1/2"	3"	4"
OD	10	13.72	17.15	21.34	26.67	33.4	42.16	48.26	60.33	76.2	88.9	114.3
ΦA	9.9	13.5	16.95	21.1	26.45	33.1	41.85	47.95	60	75.9	88.5	113.9
C	16	24	24	24	32	32	32	32	32	45	60	70
L	32	38	40	45	60	60	65	65	65	90	100	110

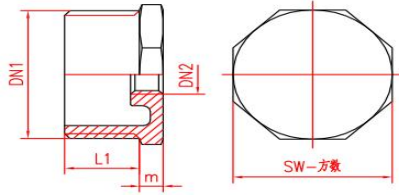
Double Hose Nipple



Item \ Size	1/8"	1/4"	3/8"	1/2"	3/4"	1"	1 1/4"	1 1/2"	2"	2 1/2"	3"	4"
ΦA	9.9	13.5	16.95	21.1	26.45	33.1	41.85	47.95	60	75.9	88.5	113.9
C	16	24	24	24	32	32	32	32	32	45	60	70
L	34	42	47	50	60	62	63	65	70	105	120	140

Item \ Size	1/8"	1/4"	3/8"	1/2"	3/4"	1"	1 1/4"	1 1/2"	2"	2 1/2"	3"	4"
OD	10	13.72	17.15	21.34	26.67	33.4	42.16	48.26	60.33	76.2	88.9	114.3
ΦA	9.9	13.5	16.95	21.1	26.45	33.1	41.85	47.95	60	75.9	88.5	113.9
C	16	16	20	20	25	28	32	32	32	45	60	70
L	45	50	55	60	70	75	90	90	95	120	150	170

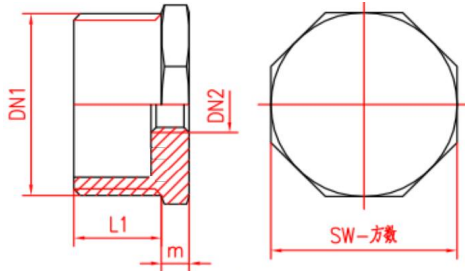
Hex. Bushing ISO4144 Type (HB)



DN1*DN2	m	L1	SW
1 1/2" * 1/2"	6.5	20.5	49
1 1/2" * 3/4"	6.5	20.5	49
1 1/2" * 1"	6.5	20.5	49
1 1/2" * 1 1/4"	6.5	20.5	49
2" * 1/2"	7	25	62
2" * 3/4"	7	25	62
2" * 1"	7	25	62
2" * 1 1/4"	7	25	62
2 1/2" * 1"	7	27	78
2 1/2" * 1 1/4"	7	27	78
2 1/2" * 1 1/2"	7	27	78
2 1/2" * 2"	7	27	78

DN1*DN2	m	L1	SW
3" * 1"	7.5	30	90
3" * 1 1/4"	7.5	30	90
3" * 1 1/2"	7.5	30	90
3" * 2"	7.5	30	90
3" * 2 1/2"	7.5	30	90
4" * 1 1/2"	8	36	115
4" * 2"	8	36	115
4" * 2 1/2"	8	36	115
4" * 3"	8	36	115

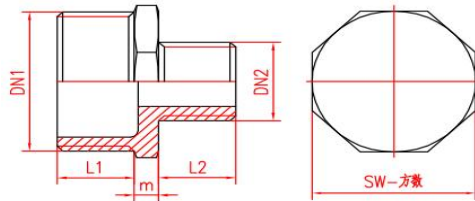
Hex. Bushing Heavy Type (HB)



DN1*DN2	m	L1	SW
1/4" * 1/8"	4	11	15
3/8" * 1/8"	3.5	11.5	17.5
3/8" * 1/4"	5	12.7	18.5
1/2" * 1/8"	4.8	15.2	22.5
1/2" * 1/4"	4.8	15.4	22.5
1/2" * 3/8"	4.8	15.1	22.5
3/4" * 1/4"	5.7	16.6	28
3/4" * 3/8"	5.8	16.7	28.3
3/4" * 1/2"	5.6	16.9	28.5
1" * 1/4"	6.8	19	34.8
1" * 3/8"	6.8	19	34.8
1" * 1/2"	7	18.9	34.8
1" * 3/4"	7.2	18.8	35
1 1/4" * 1/2"	8.5	20.5	44
1 1/4" * 3/4"	8.5	20.3	43.4
1 1/4" * 1"	8.4	20.6	43.9
1 1/2" * 1/2"	8	21.5	48.8
1 1/2" * 3/4"	8.5	21.5	49
1 1/2" * 1"	8.4	21.6	49

DN1*DN2	m	L1	SW
1 1/2" * 1 1/4"	8.2	21.8	49
2" * 1/2"	8.2	25.6	62
2" * 3/4"	8.4	25.2	62
2" * 1"	8.4	25.6	61.8
2" * 1 1/4"	8.5	25.5	62.5
2" * 1 1/2"	8.8	25.4	62.3
2 1/2" * 1"	10.8	28	78.3
2 1/2" * 1 1/4"	10.5	28.2	77.8
2 1/2" * 1 1/2"	10.7	28.1	78.3
2 1/2" * 2"	10.8	28.2	78
3" * 1"	10.8	30	89.5
3" * 1 1/4"	10.8	30	89.5
3" * 1 1/2"	11	29.7	89.7
3" * 2"	12	28.5	89.8
3" * 2 1/2"	11.8	30.2	92.5
4" * 1 1/2"	12	35.8	116.2
4" * 2"	12	35.6	115.7
4" * 2 1/2"	12	35.6	115.7
4" * 3"	13	34.8	115.8

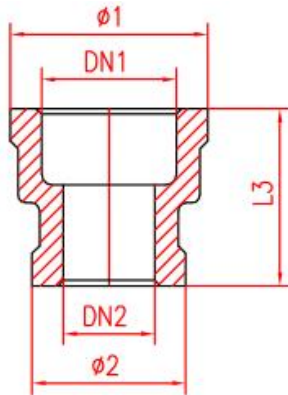
Red. Hex. Nipple(RHN)



DN1*DN2	m	L1	L2	SW
1/4"*1/8"	5.7	12.1	9.3	15
3/8"*1/8"	5.7	12.2	9.1	18.5
3/8"*1/4"	6	12	12	18.5
1/2"*1/8"	5.5	14.5	8.8	22
1/2"*1/4"	5.8	14.5	11.7	22
1/2"*3/8"	5.5	14.6	12.3	22.5
3/4"*1/4"	6	15.5	11.3	28
3/4"*3/8"	6.6	16.6	13	28.4
3/4"*1/2"	6.3	17	14.5	28.4
1"*1/4"	8.8	19.2	12	35
1"*3/8"	7.2	18.8	12.8	35.3
1"*1/2"	6.3	19	15	34.5
1"*3/4"	7	18.3	16.6	35.2
1 1/4"*3/8"	25.5	2	12	44
1 1/4"*1/2"	7.8	20.2	15	44.2
1 1/4"*3/4"	7.7	20.5	16.8	44
1 1/4"*1"	7.8	20.5	18.3	44

DN1*DN2	m	L1	L2	SW
1 1/2"*1/2"	8.5	21	15	50
1 1/2"*3/4"	9.4	21	17	50
1 1/2"*1"	9.9	20.8	18.6	49.9
1 1/2"*1 1/4"	9.9	20.8	20.3	50
2"*1/2"	9.8	26	14.6	62.3
2"*3/4"	9.7	25.7	17	62
2"*1"	9.4	26	18.6	62
2"*1 1/4"	10.3	25.3	20.7	61.9
2"/1 1/2"	9.5	26	21.5	62
2 1/2"*1"	10.8	28	18.2	78.5
2 1/2*1 1/4"	10.6	28	20.4	78
2 1/2"*1 1/2"	10.3	28.5	21	78
2 1/2"*2"	11	29.5	25	78
3"*2"	12	30	25.3	92
3"*2 1/2"	12.2	30	28.5	92
4"*3"	12	34	32	115.5

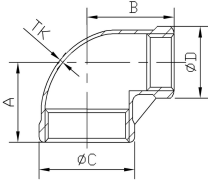
Reduce Socket Banded(RSB)



DN1*DN2	Ø1	Ø2	L3
1/4"*1/8"	17.1	14	21.1
3/8"*1/8"	22	14	25
3/8"*1/4"	22	17.5	28.1
1/2"*1/4"	26.5	17.3	29.1
1/2"*3/8"	26.1	21	31.7
3/4"*1/4"	32	17	30.8
3/4"*3/8"	32.2	21	33.4
3/4"*1/2"	32.1	27	36.6
1"*1/4"	40	17.2	33
1"*3/8"	39.6	21.2	35.5
1"*1/2"	38.77	26	36.5
1"*3/4"	39.5	32	40
1 1/4"*1/2"	46.1	25	41.2
1 1/4"*3/4"	49	32	42.4
1 1/4"*1"	48.9	39	43.2
1 1/2"*1/2"	55.2	26.3	38.2
1 1/2"*3/4"	52.3	30.8	42

DN1*DN2	Ø1	Ø2	L3
1 1/2"*1"	55.2	38.5	43
1 1/2"*1 1/4"	55.3	48.5	46
2"*1/2"	64.4	25.3	45.5
2"*3/4"	64.5	30.8	45.5
2"*1"	66.3	38.7	49.2
2"*1 1/4"	68.7	49.2	51.2
2"/1 1/2"	69	55.5	51.5
2 1/2*1 1/4"	82.3	47	53
2 1/2"*1 1/2"	82.2	53	53
2 1/2"*2"	83	65.75	58.3
3"*2"	95.5	66	60
3"*2 1/2"	95.5	81.9	63.3
3"*2 1/2"	95.5	82.2	72
4"*2"	123.5	68.4	68
4"/2 1/2"	124	83.3	68.2
4"*3"	124	97.7	95.5

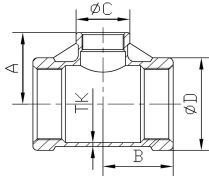
Reduce 90 Elbow (RLB)



Size:

1/2"*3/8"	1/2"*1/4"	3/4"*1/2"	3/4"*3/8"	3/4"*1/4"	1"*3/4"	1"*1/2"	1"*3/8"	1"*1/4"	1 1/4"*1"	1 1/4"*3/4"	1 1/4"*1/2"	1 1/2"*1 1/4"
1 1/2"*1"	1 1/2"*3/4"	1 1/2"*1/2"	2"*1 1/2"	2"*1 1/4"	2"*1"	2"*3/4"	2"*1/2"					

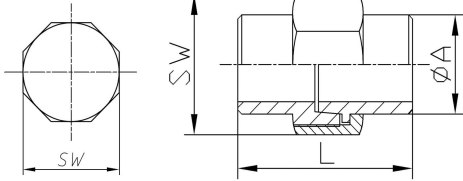
Reduce Tee (RTB)



Size:

1/2"*3/8"	1/2"*1/4"	3/4"*1/2"	3/4"*3/8"	3/4"*1/4"	1"*3/4"	1"*1/2"	1"*3/8"	1"*1/4"	1 1/4"*1"	1 1/4"*3/4"	1 1/4"*1/2"	1 1/2"*1 1/4"
1 1/2"*1"	1 1/2"*3/4"	1 1/2"*1/2"	2"*1 1/2"	2"*1 1/4"	2"*1"	2"*3/4"	2"*1/2"					

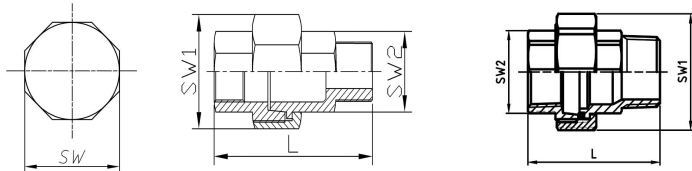
Unions Conical BW (New Light Type)



Item \ Size	1/8"	1/4"	3/8"	1/2"	3/4"	1"	1 1/4"	1 1/2"	2"	2 1/2"	3"	4"
SW				34.4	41.2	48.3	60.3	66.5	79	96.5	110	141
A				21.3	26.9	33.4	42.4	48.3	60.4	76.3	88.9	114.3
L				40	44	48	49	52	60	67	75	78
Square				8	8	8	10	10	10	10	10	10

Oponion: flat connection with PTFE seal

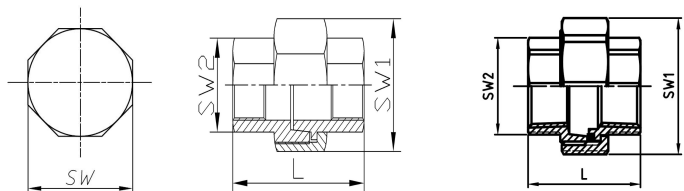
Unions conical M/F (New Light Type)



Item \ Size	1/2"	3/4"	1"	1 1/4"	1 1/2"	2"	2 1/2"	3"	4"
SW1	34.4	41.2	48.3	60.3	66.5	79	96.5	110	141
SW2	23.8	29.2	36.5	46	52	64	80	93.5	118.5
L	47.5	51.7	60	64	67.5	75.5	84.5	96	107.5
Square	8	8	8	10	10	10	10	10	10

Oponion: flat connection with PTFE seal

Unions conical F/F (New Light Type)



Item \ Size	1/2"	3/4"	1"	1 1/4"	1 1/2"	2"	2 1/2"	3"	4"
SW1	34.4	41.2	48.3	60.3	66.5	79	96.5	110	141
SW2	23.8	29.2	36.5	46	52	64	80	93.5	118.5
L	34.7	37.5	43	45.5	49	57	66	74	82.5
Square	8	8	8	10	10	10	10	10	10

Oponion: flat connection with PTFE seal