



Cangzhou Changyuan Fittings Co.,ltd

Con-Well Metal Vietnam Co.,ltd

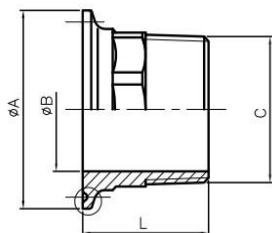
Vietnam plant: Lot 12, N11 Road, Dat Do I Industrial Zone, Phuoc Long Tho Ward, Dat Do District, Ba Ria Vung Tau Province

Head office: No.33 Jiuhe East Road,Development Zone,Cangzhou Hebei,China 061000

Casting&Forging Plant: No.26 ShigangRoad,Development Zone,Cangzhou Hebei,China 061000

Http://www.con-well.com E-mail: con-well@vip.163.com; sale@con-well.com

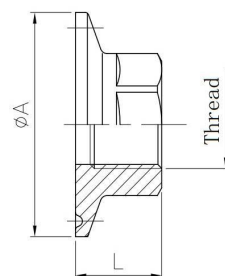
(Measures:mm)



FERRULE NIPPLE (外牙卡盘)

Item \ DN	1SX15A	1SX20A	1.5SX25A	1.5SX40A	2SX40A
A	50.5	50.5	50.5	50.5	64
B	15.3	21	27	36	40
C	1/2"	3/4"	1"	1 1/2"	1 1/2"
L	45	45	45.5	50.5	42

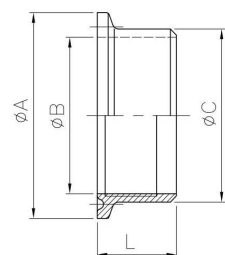
Material :304, 316 ,316L



FERRULE SOCKET (内牙卡盘)

Item \ DN	15A	20A	25A
A	50.5	50.5	50.5
L	20	20	21
Thread	1/2"	3/4"	1"

Material :304, 316 ,316L



FERRULE EXPANDING (膨胀型卡盘)

Item \ DN	1S	1.5S	2S
A	50.5	50.5	64
B	24.7	38.4	51
C	29.5	42.5	56
L	20	20	22

Material :304, 316 ,316L