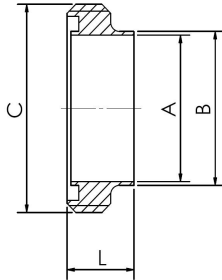


DS UNIONS (Measures:mm)

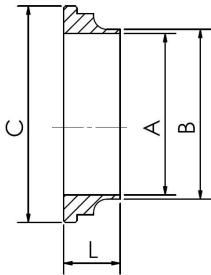
DS Welding Male



Item \ Size	1"	1 1/2"	2"	2 1/2"	3"	4"
A	22.5	35.5	48.5	60.3	72.9	97.6
B	25	38	51	63.5	76.1	101.6
C	43.6	57.6	71.6	87.6	99.6	129.5
Thread(RD)	44*1/6	58*1/6	72*1/6	88*1/6	100*1/6	130*1/6
L	18.5	20	20	24	24	24

Material :304, 316 ,316L

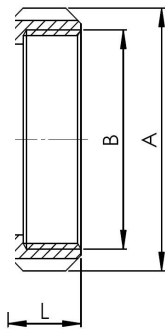
DS Welding Liner



Item \ Size	1"	1 1/2"	2"	2 1/2"	3"	4"
A	22.5	35.5	48.5	60.3	72.9	97.6
B	25	38	51	63.5	76.1	101.6
C	39.5	54	68	84	96	124
L	11	11	11	12	12	12

Material :304, 316 ,316L

DS Round Nut (with slots)



Item \ Size	1"	1 1/2"	2"	2 1/2"	3"	4"
A	57	71	86	103	115	147
B	44*1/6	58*1/6	72*1/6	88*1/6	100*1/6	130*1/6
C	35	48.5	62.5	76.5	88.5	117
L	20	20	22	24	25	28

Material :304