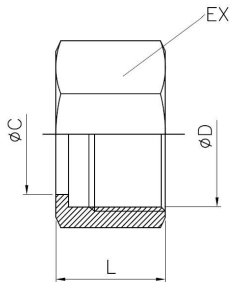


IDF UNIONS (Measures:mm)

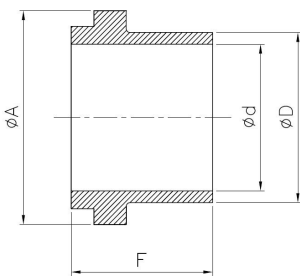
IDF Standard



IDF Hexgon Nut

Size	C	D	L	EX
1"	30.50	34.34X8T ACME	30	46
1 1/2"	43.50	47.86X8T ACME	30	60
2"	57.00	61.37X8T ACME	30	75
2 1/2"	70.70	74.88X8T ACME	30	90
3"	83.30	88.4X8T ACME	30	105
4"	112.00	122.05X6T ACME	35	133

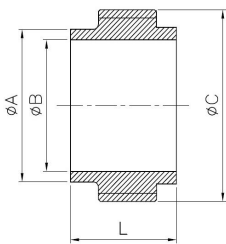
IDF Standard



IDF Welding liner

Size	A	D	d	F
1"	33.80	25.65	22.2	21.5
1 1/2"	47.00	38.35	34.9	21.5
2"	60.50	51.05	47.6	21.5
2 1/2"	74.00	63.75	60.3	21.5
3"	87.50	76.45	73	21.5
4"	120.60	101.85	97.6	30

IDF Standard



IDF Welding Male

Size	A	B	C	L
1"	25.65	22.20	37.13X8T ACME	21.5
1 1/2"	38.35	34.90	50.65X8T ACME	21.5
2"	51.05	47.60	64.16X8T ACME	21.5
2 1/2"	63.75	60.30	77.67X8T ACME	21.5
3"	76.45	73.00	91.19X8T ACME	21.5
4"	101.85	97.60	125.9X6T ACME	30