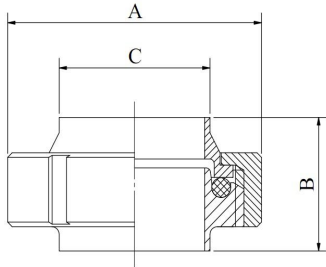


RJT UNIONS (Measures:mm)

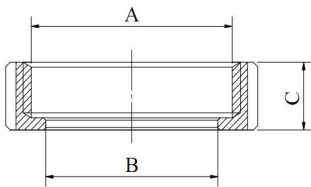
BSM RJT Standard



BSM RJT COMPLETE UNION

SIZE	A	B	C	A/F
25.4	59	44	25.4	51
38.1	75	44	38.1	64
50.8	91	44	50.8	78
63.5	106	44	63.5	91
76.2	116	44	76.2	104
101.6	145	44	101.6	130
152.4	212	53	152.4	184

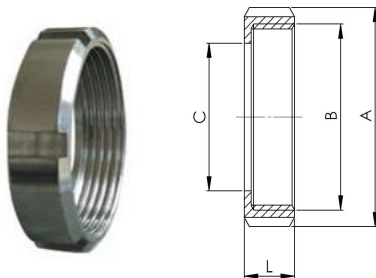
BSM RJT Standard



RJT HEX NUT CF8

SIZE	A	B	C
25.4	42.3X8TPI WHIT	33.3	22
38.1	55.0X8TPI WHIT	46.0	22
50.8	67.8X6TPI WHIT	58.7	22
63.5	80.5X6TPI WHIT	71.4	22
76.2	93.2X6TPI WHIT	84.1	22
101.6	118.6X6TPI WHIT	109.5	22
152.4	169.4X6TPI WHIT	160.3	24

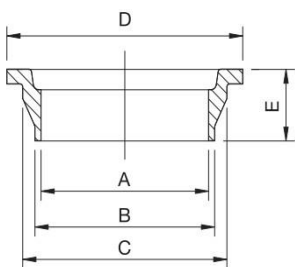
BSM RJT Standard



RJT ROUND NUT CF8

SIZE	A	B	C	L	SLOTS
25.4	59	46.8	33.3	22.2	4
38.1	72	59.3	45.8	22.2	4
50.8	86	74.1	58.7	22.2	6
63.5	98	86.6	71.4	22.2	6
76.2	111	99.0	84.1	22.2	6
101.6	136	125.5	108.8	22.2	6

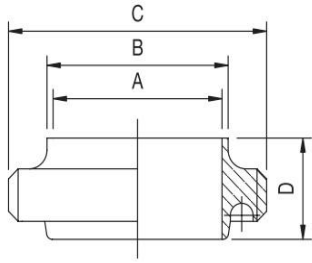
BSM RJT Standard



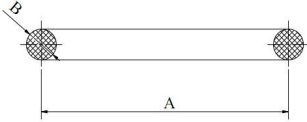
BSM RJT LINER

SIZE	A	B	C	D	E
25.4	22.2	25.4	32.6	41.3	19
38.1	34.9	38.1	45.3	54.0	19
50.8	47.6	50.8	58.0	66.7	19
63.5	60.3	63.5	70.7	79.4	19
76.2	73.0	76.2	83.4	92.1	19
101.6	97.6	101.6	108.8	117.5	19
152.4	149.2	152.4	159.6	168.3	27

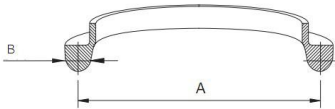
BSM RJT Standard



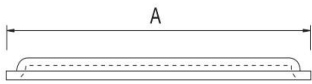
BSM RJT Standard



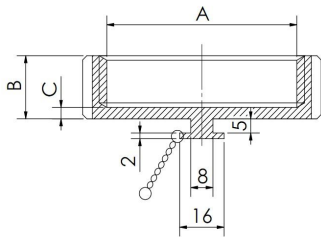
BSM RJT Standard



BSM RJT Standard



BSM RJT Standard



BSM RJT MALE

SIZE	A	B	C	D
25.4	22.2	25.4	45.7X8TPI WHIT	26.8
38.1	34.9	38.1	58.4X8TPI WHIT	26.8
50.8	47.6	50.8	72.7X6TPI WHIT	26.8
63.5	60.3	63.5	85.4X6TPI WHIT	26.8
76.2	73	76.2	98.1X6TPI WHIT	26.8
101.6	97.6	101.6	123.5X6TPI WHIT	26.8
152.4	149.2	152.4	174.3X6TPI WHIT	26.8

BSM RJT SEAL(O-RING)EPDM

SIZE	A	B
25.4	33.3	6.5
38.1	46	6.5
50.8	58.7	6.5
63.5	71.4	6.5
76.2	84.1	6.5
101.6	110.2	6.5
152.4	162.6	6.5

BSM RJT CIP SEAL(O-RING)EPDM

SIZE	A	B
25.4	33.3	6.5
38.1	46	6.5
50.8	58.7	6.5
63.5	71.4	6.5
76.2	84.1	6.5
101.6	110.2	6.5
152.4	162.6	6.5

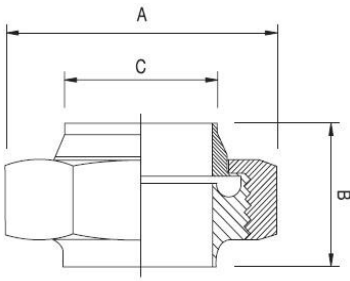
BSM RJT BLANK CAPS

SIZE	A
25.4	41.3
38.1	54.0
50.8	66.7
63.5	79.4
76.2	92.1
101.6	117.5
152.4	169.1

BSM RJT BALNK HEX NUT C/W CHAIN

SIZE	A	B	C
25.4	42.2X8TPI WHIT	22	4
38.1	55.2X8TPI WHIT	22	4
50.8	68.5X6TPI WHIT	22	4
63.5	81.0X6TPI WHIT	22	4
76.2	93.7X6TPI WHIT	22	4
101.6	119.8X6TPI WHIT	22	4

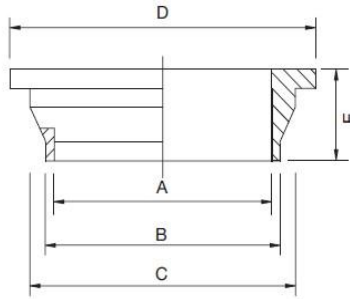
BSM FLAT-FACED



BSM FLAT-FACED COMPLETE UNION

SIZE	A	B	C	A/F
25.4	59	44	25.4	51
38.1	75	44	38.1	64
50.8	91	44	50.8	78
63.5	106	44	63.5	91
76.2	116	44	76.2	104
101.6	145	44	101.6	130
152.4	212	53	152.4	184

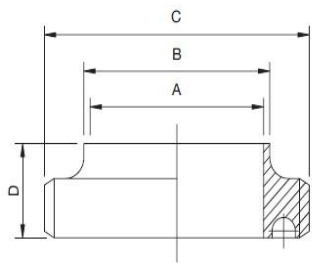
BSM FLAT-FACED



BSM FLAT-FACED LINER

SIZE	A	B	C	D	E
25.4	22.2	25.4	32.6	41.3	19
38.1	34.9	38.1	45.3	54.0	19
50.8	47.6	50.8	58.0	66.7	19
63.5	60.3	63.5	70.7	79.4	19
76.2	73.0	76.2	83.4	92.1	19
101.6	97.6	101.6	108.8	117.5	19
152.4	149.2	152.4	159.6	168.3	27

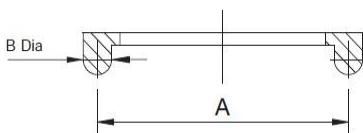
BSM FLAT-FACED



BSM RJT MALE

SIZE	A	B	C	D
25.4	22.2	25.4	45.7X8TPI WHIT	22
38.1	34.9	38.1	58.4X8TPI WHIT	22
50.8	47.6	50.8	72.7X6TPI WHIT	22
63.5	60.3	63.5	85.4X6TPI WHIT	22
76.2	73	76.2	98.1X6TPI WHIT	22
101.6	97.6	101.6	123.5X6TPI WHIT	22
152.4	149.2	152.4	174.3X6TPI WHIT	22

BSM FLAT-FACED

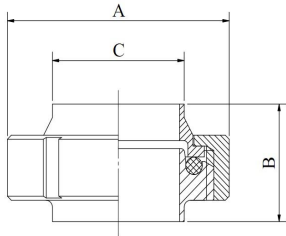


BSM FLAT-FACED SEAL(O-RING)EPDM

SIZE	A	B
25.4	33.3	6.5
38.1	46.0	6.5
50.8	58.7	6.5
63.5	71.4	6.5
76.2	84.1	6.5
101.6	110.2	6.5
152.4	162.6	6.5

RJT UNIONS (Measures:mm)

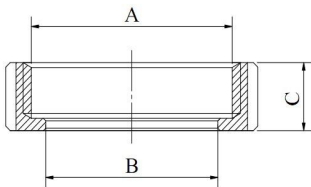
BSM RJT Standard



BSM RJT COMPLETE UNION

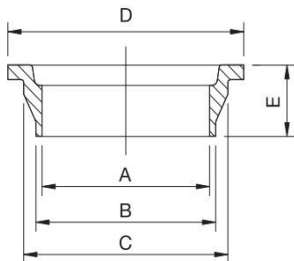
SIZE	A	B	C	A/F
25.4	59	44	25.4	51
38.1	75	44	38.1	65
50.8	91	44	50.8	79
63.5	106	44	63.5	92
76.2	116	44	76.2	105
101.6	145	44	101.6	131
152.4	212	53	152.4	184

RJT HEX NUT CF8



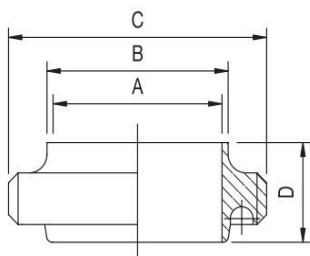
SIZE	A	B	C
25.4	42.2X8TPI WHIT	33.3	22
38.1	55.2X8TPI WHIT	46	22
50.8	68.5X6TPI WHIT	58.7	22
63.5	81.0X6TPI WHIT	71.4	22
76.2	93.7X6TPI WHIT	84.1	22
101.6	119.8X6TPI WHIT	109.5	22
152.4	169.4X6TPI WHIT	160.3	24

BSM RJT LINER



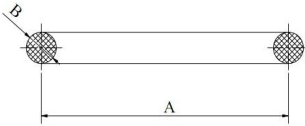
SIZE	A	B	C	D	E
25.4	22.2	25.4	32.4	41.3	19
38.1	34.9	38.1	45.1	54	19
50.8	47.6	50.8	57.8	66.7	19
63.5	60.3	63.5	70.5	79.4	19
76.2	73	76.2	83.1	92.1	19
101.6	98.4	101.6	108.6	117.5	19
152.4	149.2	152.4	159.4	168.3	27

BSM RJT MALE



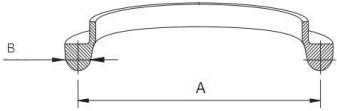
SIZE	A	B	C	D
25.4	22.2	25.4	45.4X8TPI WHIT	26.8
38.1	34.9	38.1	58.1X8TPI WHIT	26.8
50.8	47.6	50.8	72.4X6TPI WHIT	26.8
63.5	60.3	63.5	85.1X6TPI WHIT	26.8
76.2	73	76.2	97.8X6TPI WHIT	26.8
101.6	98.4	101.6	123.2X6TPI WHIT	26.8
152.4	149.2	152.4	174.3X6TPI WHIT	26.8

BSM RJT SEAL(O-RING)EPDM



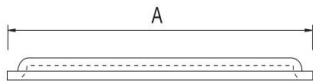
SIZE	A	B
25.4	33.3	6.5
38.1	46	6.5
50.8	58.7	6.5
63.5	71.4	6.5
76.2	84.1	6.5
101.6	110.2	6.5
152.4	162.6	6.5

BSM RJT CIP SEAL(O-RING)EPDM



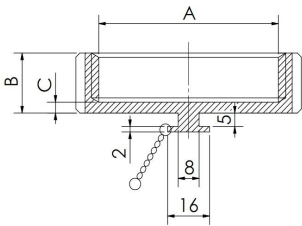
SIZE	A	B
25.4	33.3	6.5
38.1	46	6.5
50.8	58.7	6.5
63.5	71.4	6.5
76.2	84.1	6.5
101.6	110.2	6.5
152.4	162.6	6.5

BSM RJT BLANK CAPS



SIZE	A
25.4	41.3
38.1	54.0
50.8	66.7
63.5	79.4
76.2	92.1
101.6	117.5
152.4	169.1

BSM RJT BALNK HEX NUT C/W CHAIN



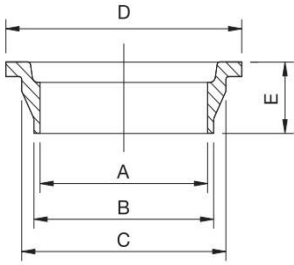
SIZE	A	B	C
25.4	42.2X8TPI WHIT	22	4
38.1	55.2X8TPI WHIT	22	4
50.8	68.5X6TPI WHIT	22	4
63.5	81.0X6TPI WHIT	22	4
76.2	93.7X6TPI WHIT	22	4
101.6	119.8X6TPI WHIT	22	4

BSM FLAT-FACED

BSM FLAT-FACED COMPLETE UNION

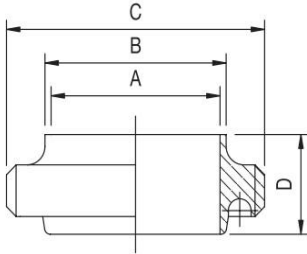
SIZE	A	B	C	A/F
25.4	59	44	25.4	51
38.1	75	44	38.1	65
50.8	91	44	50.8	79
63.5	106	44	63.5	92
76.2	116	44	76.8	105
101.6	145	44	101.6	131
152.4	212	53	152.4	184

BSM FLAT-FACED LINER



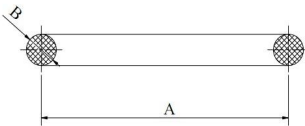
SIZE	A	B	C	D	E
25.4	22.2	25.4	32.4	41.3	19
38.1	34.9	38.1	45.1	54	19
50.8	47.6	50.8	57.8	66.7	19
63.5	60.3	63.5	70.5	79.4	19
76.2	73	76.2	83.1	92.1	19
101.6	98.4	101.6	108.6	117.5	19
152.4	149.2	152.4	159.4	168.3	27

BSM RJT MALE



SIZE	A	B	C	D
25.4	22.2	25.4	45.4X8TPI WHIT	26.8
38.1	34.9	38.1	58.1X8TPI WHIT	26.8
50.8	47.6	50.8	72.4X6TPI WHIT	26.8
63.5	60.3	63.5	85.1X6TPI WHIT	26.8
76.2	73	76.2	97.8X6TPI WHIT	26.8
101.6	98.4	101.6	123.2X6TPI WHIT	26.8
152.4	149.2	152.4	174.3X6TPI WHIT	26.8

BSM FLAT-FACED SEAL(O-RING)EPDM



SIZE	A	B
25.4	33.3	6.5
38.1	46	6.5
50.8	58.7	6.5
63.5	71.4	6.5
76.2	84.1	6.5
101.6	110.2	6.5
152.4	162.6	6.5